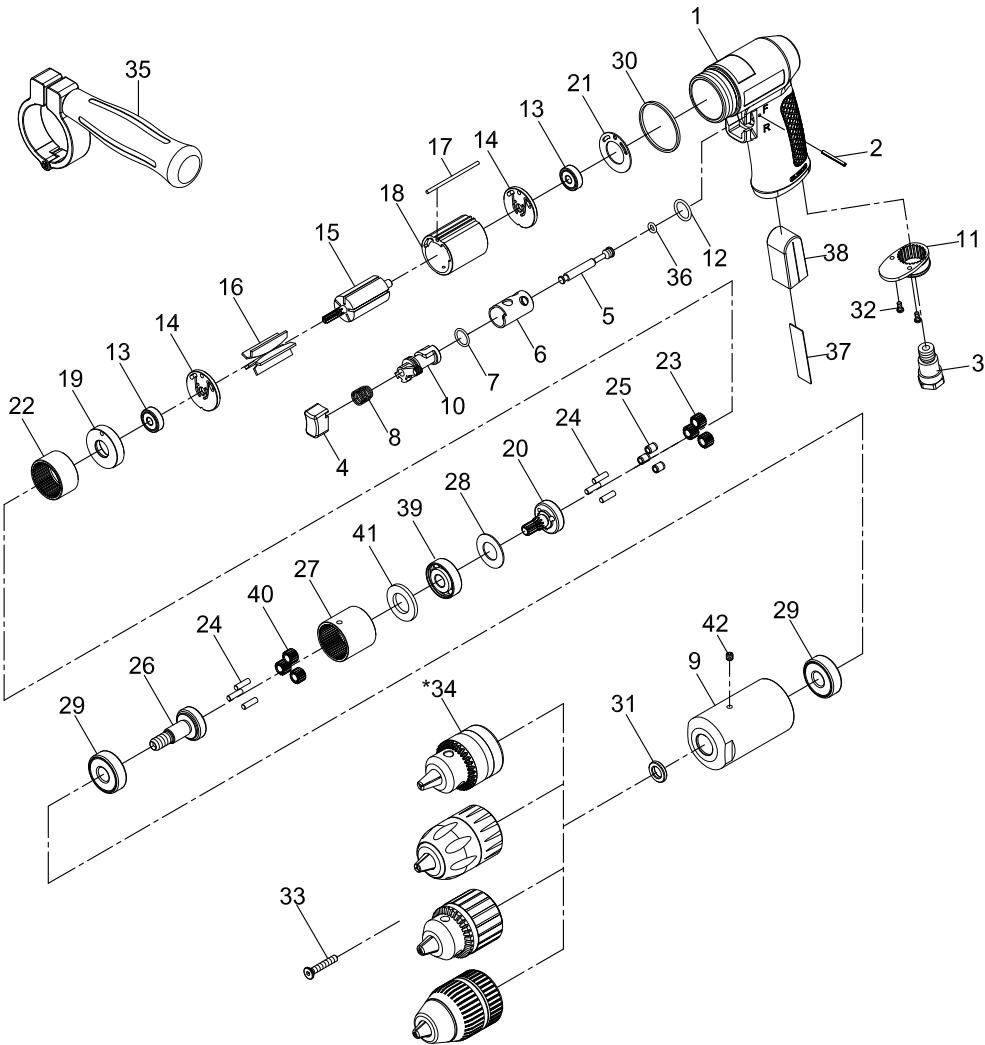


1/2" REVERSIBLE AIR DRILL



Index No.	Parts No.	Description	Index No.	Parts No.	Description
1	75-750001	Motor Housing	24	30124	Pin (6) (Ø4x13.8L)
2	80202	Spring Pin (Ø2.5x24L)	25	80225	Bushing(3)
3	75-725303	Air Inlet	26	73426	Work Spindle
4	795804	Trigger	27	73442	Internal Gear
5	80205-12	Valve Stem	28	73420	Spacer
6	80206	Reverse Bushing	29	080227	Ball Bearing (2) (6201Z)
7	80209	O-Ring (Ø12xØ1.6)	30	75-725351	Decoration Ring
8	75-730008	Valve Spring	31	70133	Washer
9	73436	Clamp Nut	32	40309	Screw (2) (TS2.9)
10	80210	Reverse Lever	33	70430-12	Chuck Screw (M5x30L)
11	70110	Exhaust Diffuser	*34	10033-11	Standard Keyed Chuck (1/2")
12	80247	O-Ring (Ø13.8xØ2)		10033-12	Standard Keyless Chuck (1/2")
13	030113	Ball Bearing (2) (626ZZ)		10033-13	Industrial Keyed Chuck (1/2")
14	80214	End Plate (2)		10033-14	Industrial Keyless Chuck (1/2")
15	80215	Rotor	35	822339-100SUB1	Handle
16	80216	Rotor Blades (5)	36	70107	O-Ring (Ø4.8xØ1.9)
17	80217-13	Pin	37	75-750007	Iron Sheet
18	80218-22	Cylinder	38	75-750020	Damping Material
19	80219	Front End Plate	39	073434	Ball Bearing (6200Z)
20	73427	Reduction Spindle	40	73441	Planet Gear (3)
21	80211	Motor Gasket	41	73421	Washer
22	80222	Internal Gear	42	40340	Set Screw (M5x5L)
23	80223	Planet Gear (3)			

*Optional Parts

77-7500-0001

09.18.2013